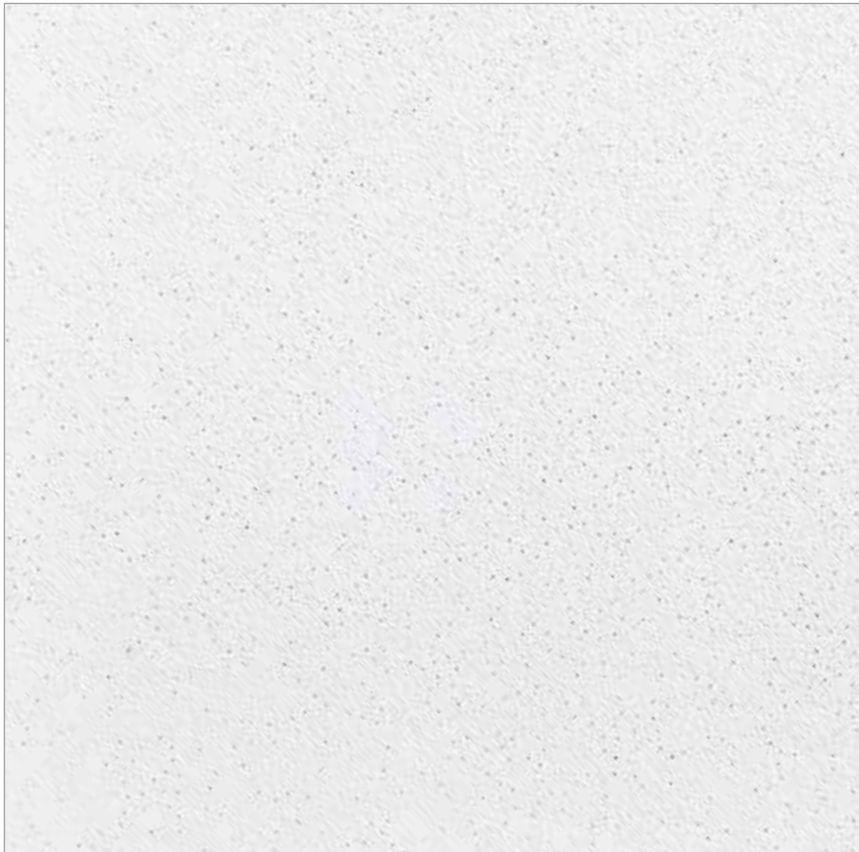


PERFORMA®

Sand Micro™
VOC Compliant



LOW
VOC

\$\$\$



LEED® v4

- MR: Environmental Product Declarations (EPDs)
- MR: Sourcing Raw Materials
- MR: Material Ingredients (HPDs)
- IEQ: Daylight
- IEQ: Low-Emitting Materials
- IEQ: Prereq. Min. Acoustic Performance (Schools)
- IEQ: Acoustic Performance
- MR: PBT Source Reduction (Healthcare)
- IEQ: Interior Lighting
- EA: Prereq. Min. Energy Performance
- EA: Optimize Energy Performance
- Recycled Content
Pre: **33%** | Post: **0%**

TOOLS

Visit CertainTeed.com/Ceilings
Download HPDs and EPDs
LEED® Information / BIM Objects
3-Part Specs / Data Pages



Carbon Footprint Reduction
Rapidly Renewable Resource Content
Recycled Content



EPD Available



HPD Available

FEATURES & BENEFITS

- Non-directional visual
- High humidity and sag resistant
- Third-party verified Environmental Product Declaration (EPD) available for this product
- Lightly textured surface provides attractive finish with excellent light reflectance and enhanced durability
- Health Product Declaration (HPD) available for this product

APPLICATIONS

- Schools
- Retail / Department Stores
- Corridors
- Hospitality Spaces
- Other Commercial Buildings / Space Applications

AVAILABLE EDGE DETAILS



Trim
15/16 Grid



Reveal
Beveled
15/16 Grid



Narrow Reveal
Corner Bevel
9/16 Grid



Narrow Reveal
Corner Bevel
9/16 Grid Bolt Slot



Sand Micro™ Reveal (SHM-154)

ATTRIBUTES

	DIMENSIONS (INCHES)	EDGE DETAIL	UL CLASSIFIED NRC	CAC	EPD AVAILABLE	HPD AVAILABLE	SAG RESISTANT	MOLD RESISTANT	LR	WASHABLE	FIRE CLASS (ASTM E1264)	EMISSION COMPLIANT	RECYCLED CONTENT
--	---------------------	-------------	-------------------	-----	---------------	---------------	---------------	----------------	----	----------	-------------------------	--------------------	------------------

SAND MICRO™

SHM-157	24 x 24 x 5/8	Trim	0.50	33	Yes	Yes	Yes	BioShield	0.88	—	Class A	Certified	33%
SHM-154	24 x 24 x 5/8	Reveal	0.50	33	Yes	Yes	Yes	BioShield	0.88	—	Class A	Certified	33%
SHM-150	24 x 24 x 5/8	Narrow Reveal	0.50	33	Yes	Yes	Yes	BioShield	0.88	—	Class A	Certified	33%
SHM-197	24 x 48 x 5/8	Trim	0.50	35	Yes	Yes	Yes	BioShield	0.88	—	Class A	Certified	33%
SHM-194	24 x 48 x 5/8	Reveal	0.50	35	Yes	Yes	Yes	BioShield	0.88	—	Class A	Certified	33%
SHM-190	24 x 48 x 5/8	Narrow Reveal	0.50	35	Yes	Yes	Yes	BioShield	0.88	—	Class A	Certified	33%

(MM)

SAND MICRO™ - METRIC

SHM-157M	600 x 600 x 15	Trim	0.50	33	Yes	Yes	Yes	BioShield	0.88	—	Class A	Certified	33%
SHM-154M	600 x 600 x 15	Reveal	0.50	33	Yes	Yes	Yes	BioShield	0.88	—	Class A	Certified	33%
SHM-150M	600 x 600 x 15	Narrow Reveal	0.50	33	Yes	Yes	Yes	BioShield	0.88	—	Class A	Certified	33%
SHM-197M	600 x 1200 x 15	Trim	0.50	35	Yes	Yes	Yes	BioShield	0.88	—	Class A	Certified	33%
SHM-194M	600 x 1200 x 15	Reveal	0.50	35	Yes	Yes	Yes	BioShield	0.88	—	Class A	Certified	33%

CAN'T FIND A SIZE? Contact your local Sales Representative or call 800-233-8990

PHYSICAL DATA

MATERIAL

Mineral Fiber

ASTM E1264 CLASSIFICATION

Type III, Form 2, Pattern C E

FIRE CLASS (ASTM E1264)

Tested according to ASTM E84 & CAN S102

Flame Spread: 25 or less

Smoke Developed: 50 or less

VOC EMISSIONS

Independently certified compliant with California Department of Public Health CDPH/EHLB/Standard Method Version 1.1, 2010.

MOLD/MILDEW RESISTANCE

BioShield® treatment included for added mold and mildew resistance.

MAINTENANCE

Wipe with a soft cloth or vacuum with brush attachment.

WARRANTY

10-year 104/90 Limited Warranty

Technical Support | certainteed.com/ceilings 800-233-8990

© 09/16 CertainTeed Corporation

CertainTeed
SAINT-GOBAIN
Ceilings